

# KBIS / IBS Trend Report 2018

**motiv**

A “must attend” event for Motiv each year is the Kitchen & Bath Industry Show (KBIS) –held concurrently with the International Builders’ Show (IBS) – featuring the latest product innovations and trends, and attended by kitchen and bath designers, dealers, architects, builders and remodelers from all over the world.

In case you missed the event, we’ve compiled some highlights in this visual report. And to provide context, here are a few observations:

- **Show Dynamics:**

We’ve not witnessed a level of excitement and creativity this strong in the kitchen / bath / home categories since 2006. We’re not economists or market analysts, but this category is HOT, and everyone we spoke with told us business is great, and they’re bullish on where the industry is headed.

- **Colors / Finish:**

Predominate use of gold and brass colors suggests that manufacturers are seeking to move luxury into the mainstream market, and away from the prior decade’s sense of austerity. But this emotional step up is neither glitzy nor over the top, and toned down by unique brushed, matte and mute finishes. Mocha and taupe are two trending colors.

- **Textures / Materials:**

The return to authenticity continues, with use of natural and organic materials – metal, wood and stone – conveying a sense of permanence, durability and high quality; a distinct departure from the high-tech world’s culture of rapidly outdated, disposable products.

- **Design:**

There’s no shortage of design innovation, with complex floral patterns (consistent with natural materials), and well as highly decorative prints and accents on products ranging from bathroom sinks to kitchen cabinets. We also see a return to art-deco influence, with hex and herringbone patterns.

- **Technology:**

Creative use of decorative and functional LED lighting continues, embedded within everything from appliance knobs and bedroom closet poles to toilets. Similarly, embedded IoT capabilities have rapidly moved beyond the novelty phase, and with the addition of cameras and voice features, will change the fundamental basis on which people interact with every type of product.

We hope this report is of interest. We welcome the opportunity to hear your thoughts on any of these trends, and to explore how they might apply to your next design challenge.

Paul Metaxatos & Bill Sterling

| Color + Finish  
| Gold + Brass



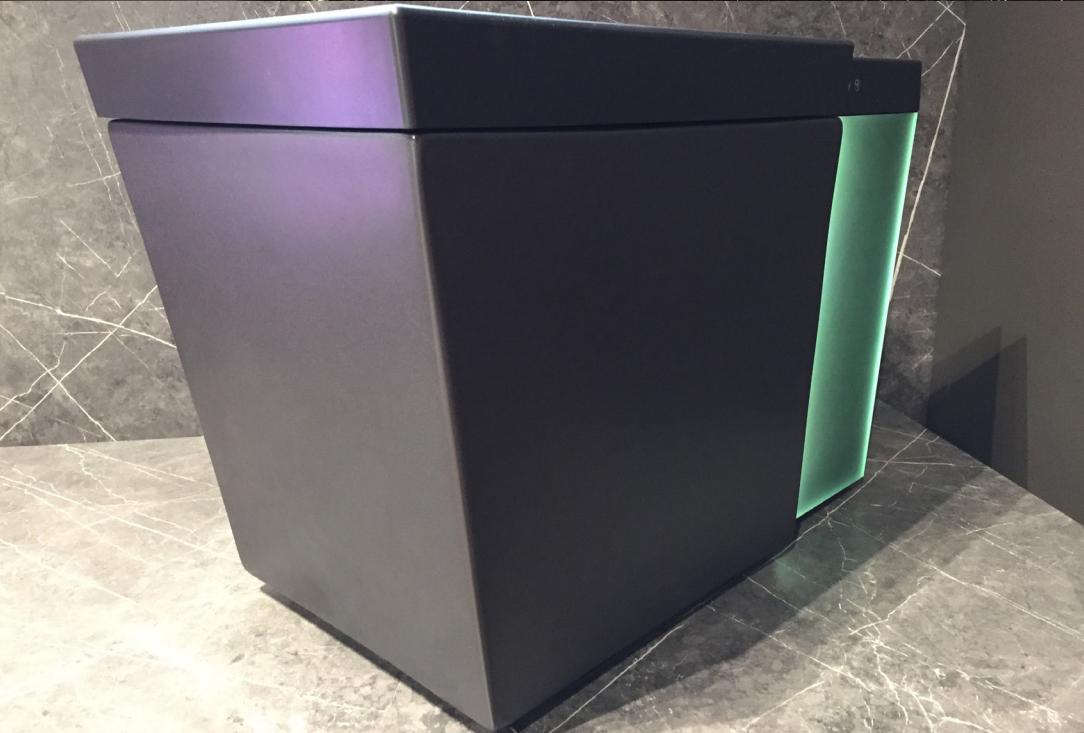
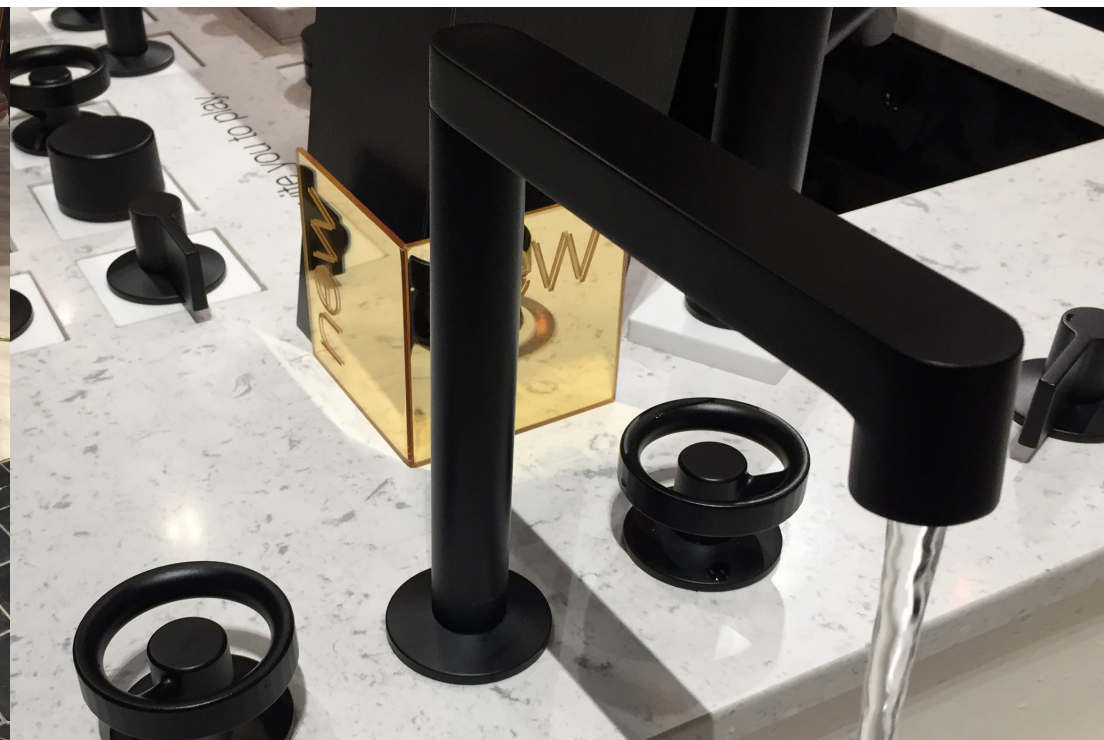
| Color + Finish  
| Rose Gold



| Color + Finish  
| Black Stainless



| Color + Finish  
| Matte Black + White

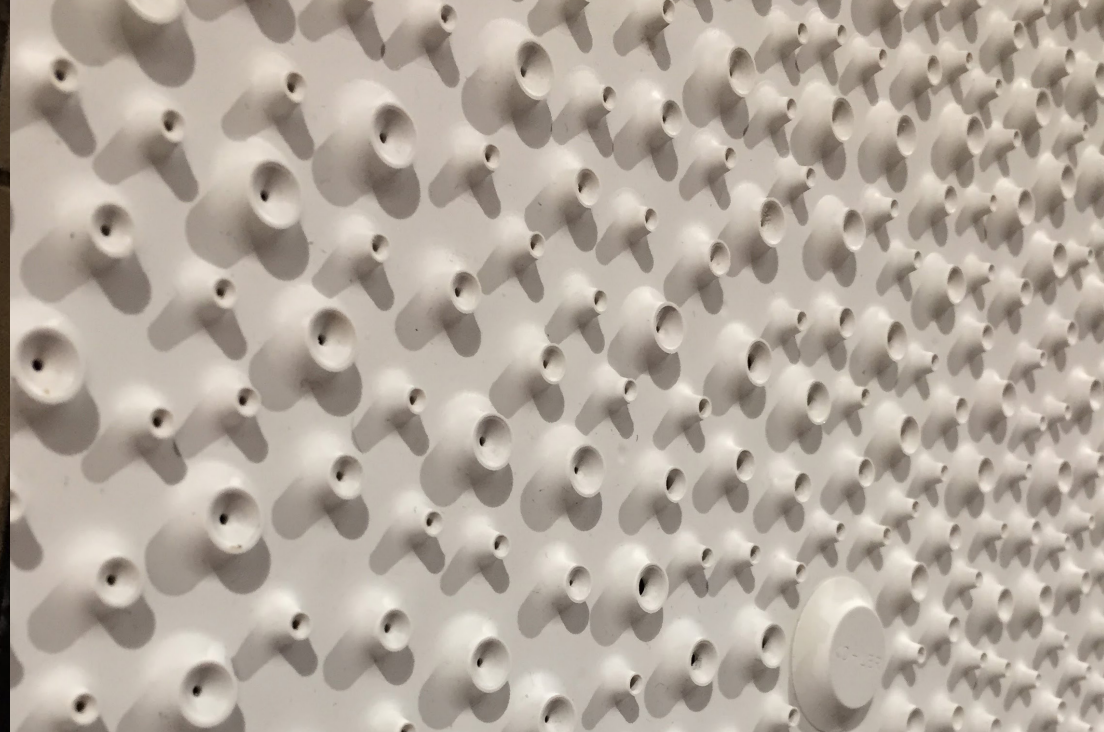
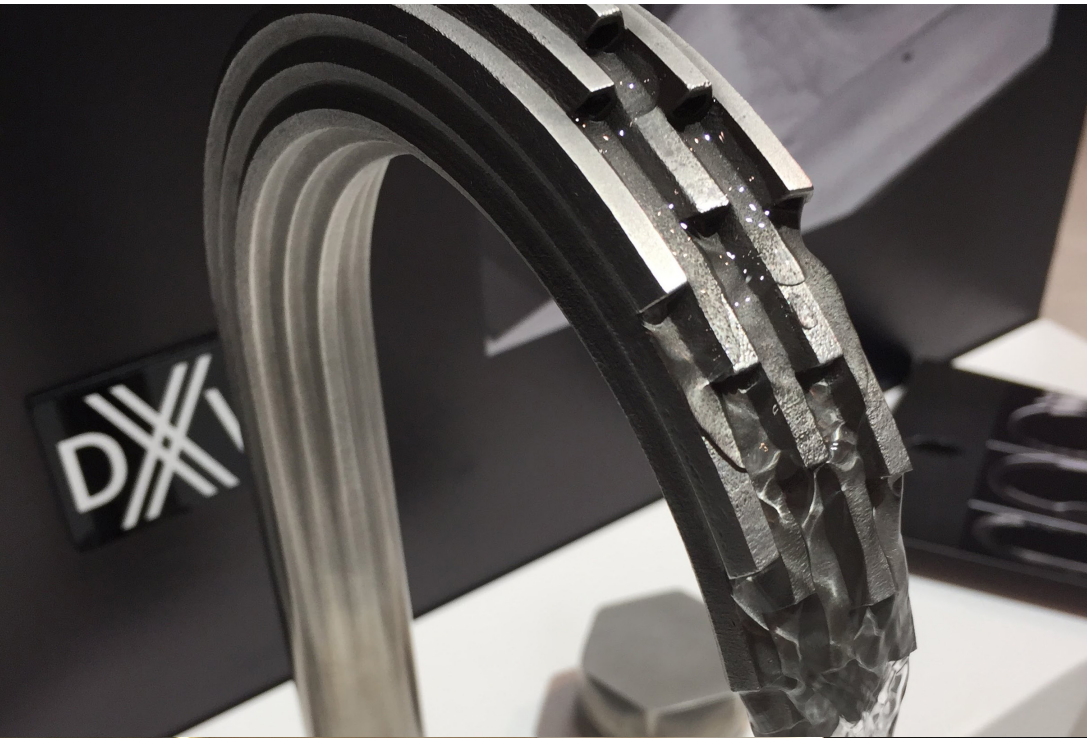


| Color + Finish  
| Mocha + Taupe

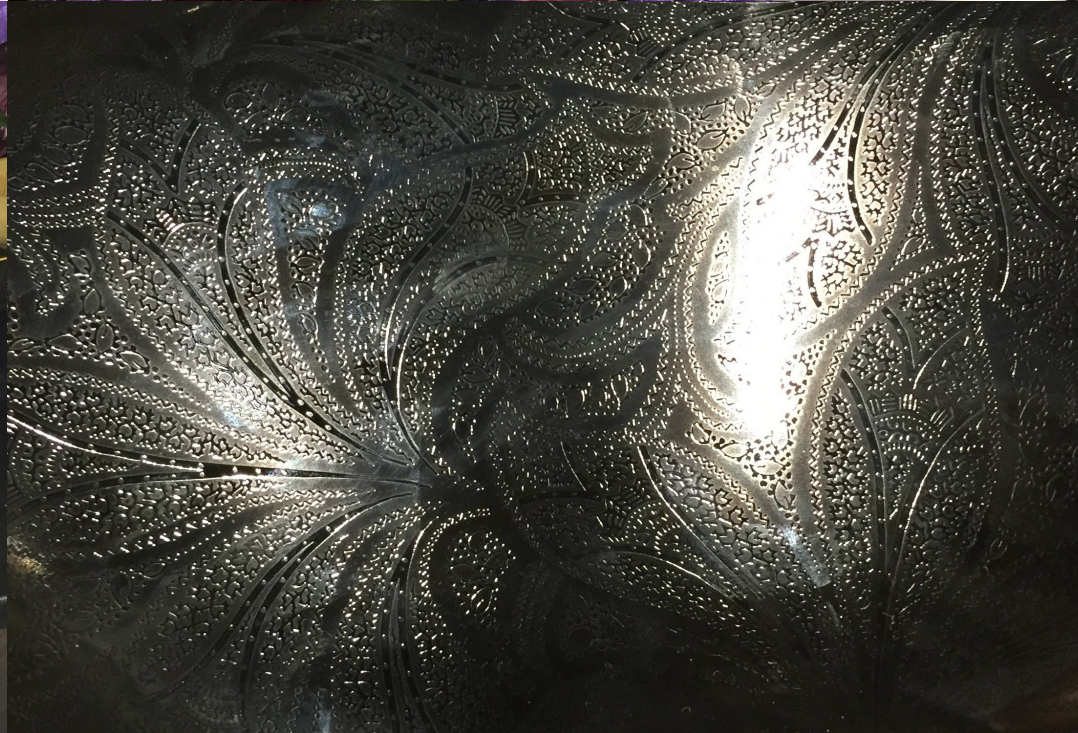


| Color + Finish  
| Jewel Tones + Muted Colors





| Patterns  
| Bloom Boom



| Patterns  
| Hex + Herringbone



| Patterns  
| Decorative Print + Accent

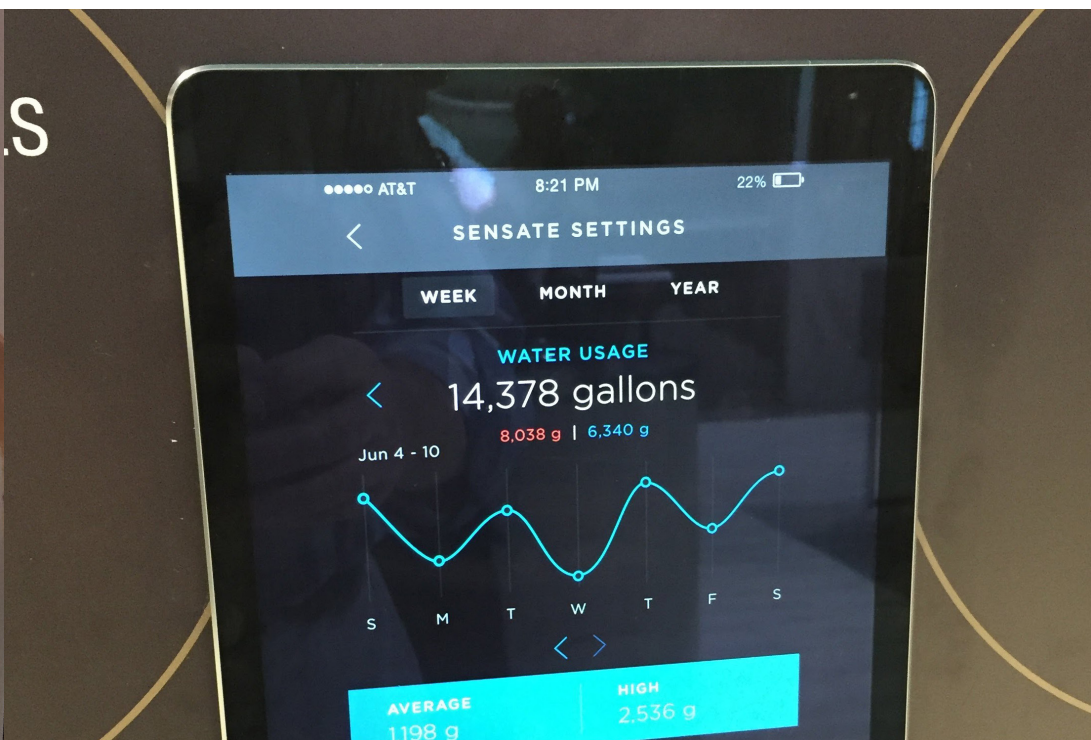
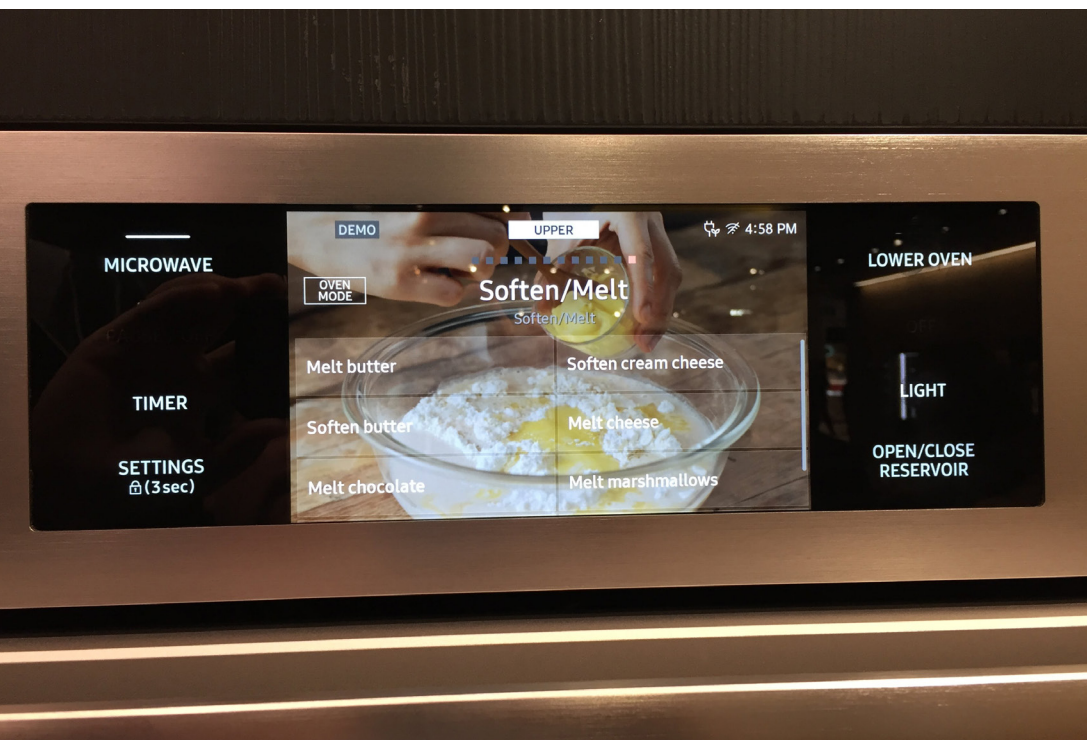


| Light  
| Mood + Setting



| Technology

| IoT + Connected Devices



Thank you

**motiv**